



# ARE YOU READY FOR THE NEXT CRISIS?

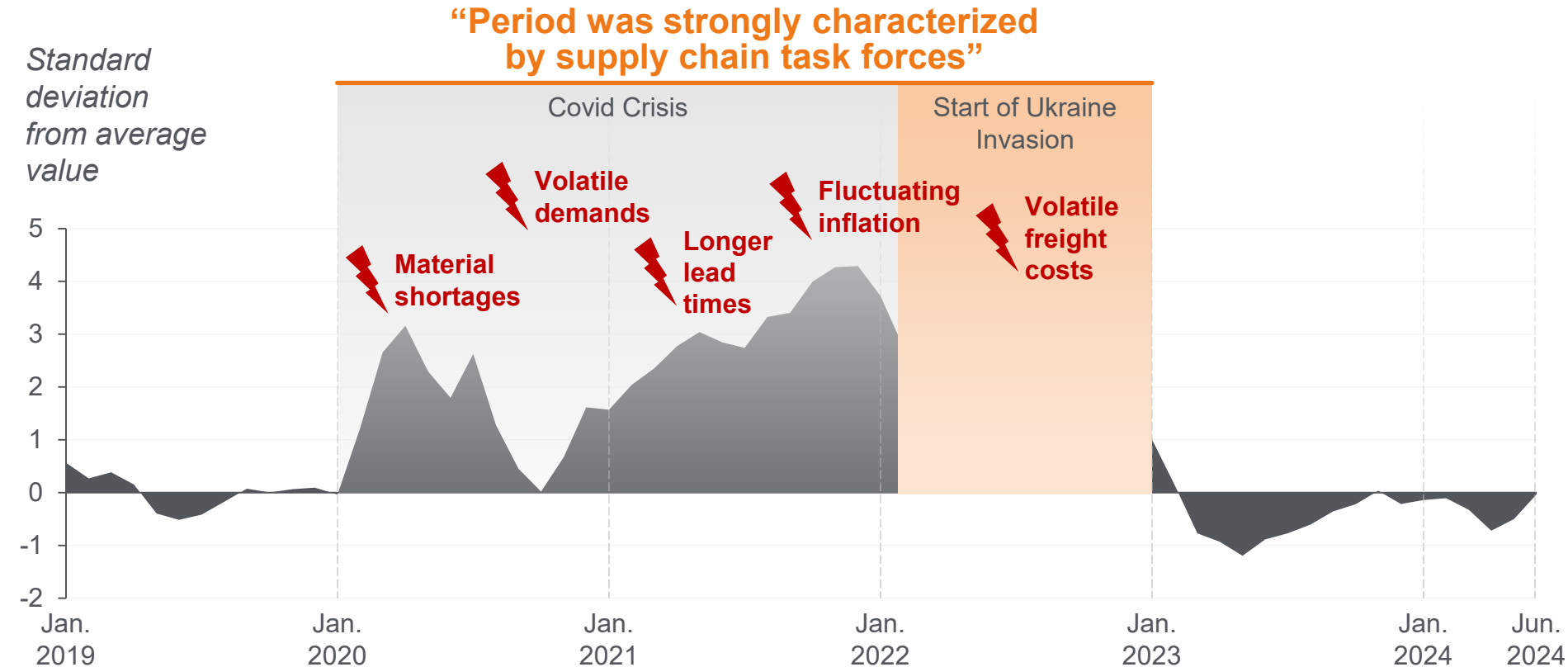
Building resilient supply chains with tailored strategies and insights

 **EFESO**  
MANAGEMENT CONSULTANTS

SUPPLY CHAIN MANAGEMENT  
**INSIGHT**

COVID, Semiconductors, Ukraine war – the list of “previous crisis” is long and has resulted in disruptions of supply chains with task forces becoming the new “normal”


## Global Supply Chain Pressure Index\*




## Ongoing challenges

- 
**Laws & regulations**

---

- 
**Technological transformation**

---

- 
**Separation of markets**

---

- 
**Geographic demand shifts**

**>>>** The crises revealed weaknesses in supply chain management, forcing companies to implement short-term measures with a series of task forces.

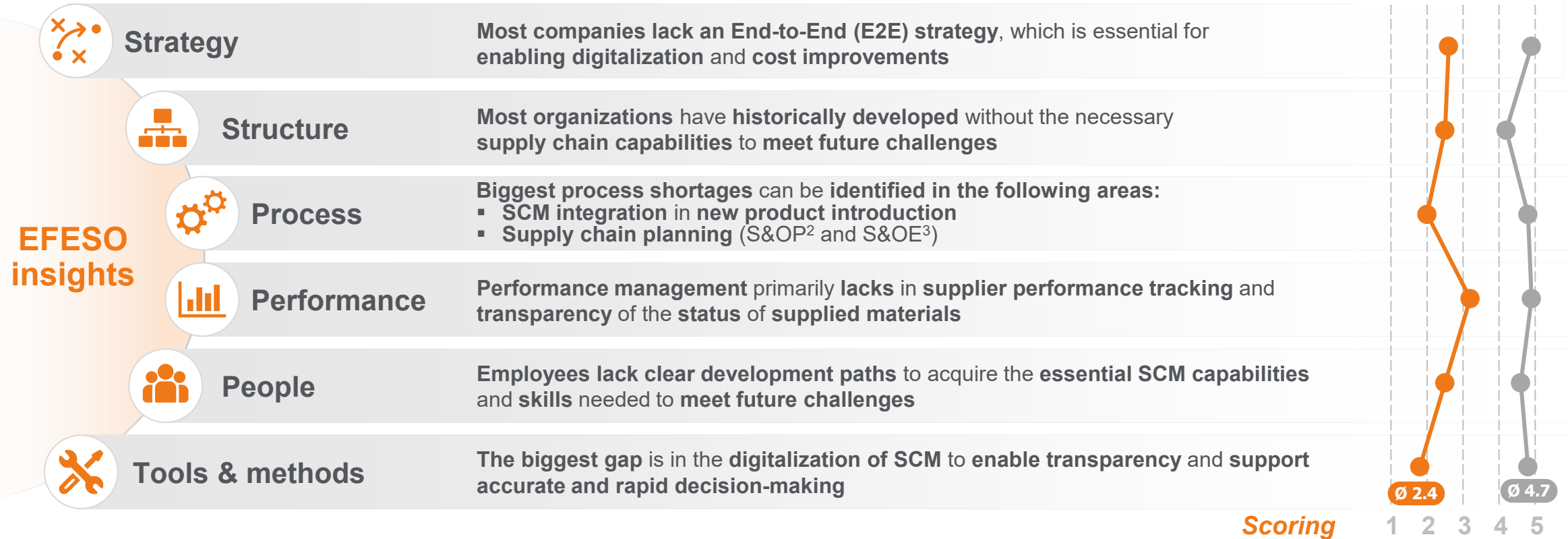


\*Source: Federal Reserve Bank of New York

COVID, Semiconductors, Ukraine war – the list of “previous crisis” is long and has resulted in disruptions of supply chains with task forces becoming the new “normal”

## SCM Maturity Assessment insights<sup>1</sup>

● Industry average ● Benchmark



What is your level of maturity in supply chain management, and are you ready for future challenges?

1) EFESO 2) Sales & Operations Planning 3) Sales & Operation Execution  
SCM = Supply Chain Management

EFESO maturity checks provide key SCM insights to enhance SCM maturity, implementing quick wins and mid-term actions to ensure readiness for the next crisis

### As-is Evaluation



**Evaluating the current situation to identify root causes and gaps to devise actionable strategies for SCM improvements**

### Benchmark



**Benchmarking with peer groups to highlight areas for potential improvements**

### Call for Action



**Development of an actionable SCM roadmap with value-benefit analysis to kickstart the journey to supply chain excellence**

OBJECTIVES



Our project approach consists of three key elements consolidated in the maturity check, which enables the development of a comprehensive SCM excellence roadmap

## 1 Maturity check elements

### E2E value stream mapping

- Identification of intercompany relations
- Identification of bottlenecks
- Identification of areas for waste reduction

### Data analysis

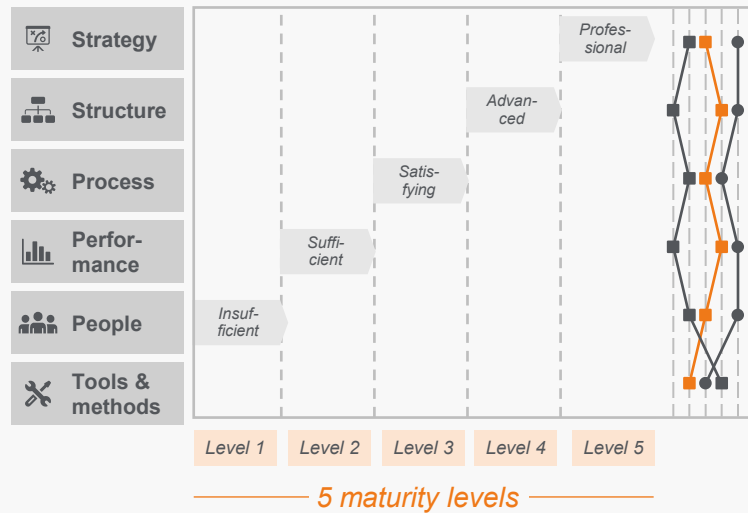
- Understanding inventory structures and excess causes
- Understanding value visibility across categories
- Understanding parameter settings for goods

### Stakeholder interviews

- Assessing SCM status comprehensively via selected stakeholder interviews
- Assessing gaps against best practices from stakeholders
- Assessing strategic directions from management

## 2 Maturity check consolidation

### Maturity check



- Maturity check elements synthesis
- Current state assessment
- Comparative industry benchmarking
- Strategic driver identification

## 3 Roadmap development

- Identify main fields of action
- Conduct a comprehensive value-benefit analysis
- Develop a comprehensive SCM roadmap

EFESO offers four customized maturity checks in supply chain management, tailored to meet your unique requirements and objectives



### Supply chain maturity check

... which covers the overall supply chain characteristics



### Supply chain inventory maturity check

... specialized on inventory



### Distribution center maturity check

... specialized on distribution center



### Disposition maturity check

... specialized on disposition



**Maturity checks will be customized to meet your specific needs**



# Project example: **Assessment of distribution center performance** with the target to develop a comprehensive turnaround roadmap to enhance short-term output



## Initial situation

- **Significant backlog positions** leading to customer dissatisfaction and substantial business losses in sales
- **Persistent decline in both service levels and output** of the distribution center
- **Inventory accuracy** is subpar, falling below industry standards
- **Previous escalations and on-site audits** have not yielded any impact

### Target:

**Identification of root causes** for the KPI decline and **development of a comprehensive turnaround roadmap** to increase sales

## Approach / method

### On-site assessment:

- Conducting comprehensive on-site analysis with value stream mapping to identify and address qualitative pain points for improvement

### Data analysis:

- Analyzing warehouse data and parameters thoroughly and simulating new storage strategies

### Stakeholder interview

- Performing stakeholder interviews

### Maturity assessment:

- Using the EFESO distribution center maturity assessment to quantitatively evaluate the maturity level of the distribution center

## Customer value added



Identification of **42 root causes** for shortcomings in processes, structure, and leadership



Development of new storage strategies and concepts with **137 parameter adjustments**



Turnaround roadmap with over **8m EUR in additional sales** short term

